

ESPintelligent SR BACKBOX

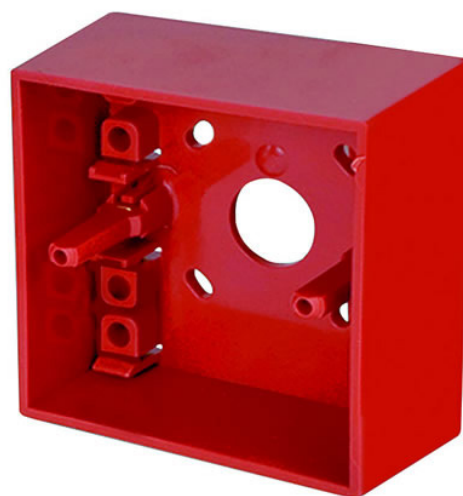
CALL POINT SURFACE MOUNTING BOX

AQL
PROTECCION. S.A.

ANBER

Features

- ▶ Durable
- ▶ For use with the HCP-E call point range
- ▶ Allows addressable call point to be surface mounted.



Description

The SR backbox is designed to allow an analogue call point to be surface mounted. The unit is colour-matched red for use with the HCP-E range.

Specification	
Ordering codes	SR BACKBOX
For use with	HCP-E range
Dimensions	86 mm (W) x 86 mm (H) x 32mm (D)
Colour / Case Material	Red / ABS