

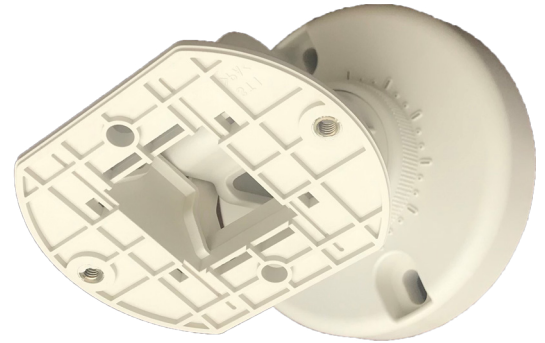
ANCILLARY YZU-AA

Flame Detector Universal Mount



Features

- ▶ Easy to install
- ▶ Allows Hochiki devices to be angled
- ▶ Robust design
- ▶ Can be used for both fire detection and emergency lighting units.



Description

The YZU-AA is an angled ceiling bracket which allows any Hochiki device, which uses a standard mounting base, to be ceiling mounted at an angle. The bracket is adjustable to any angle and colour matches the ivory product range.

Specification

Ordering codes	YZU-AA
Material	Self-extinguishing resin
Colour	Ivory (Munsell : 5Y8.5/1)
Vertical adjustable angle	Installation angle 0 ~ 90°
Horizontal adjustable angle	Rotation angle 360° (angle scale is every 10°)
Compatible with	DRD-E Flame Detector
Fixing centres (mm)	66.7 x 5.4
Weight (g) / Dimensions (mm)	140 / H 98 x ø 90